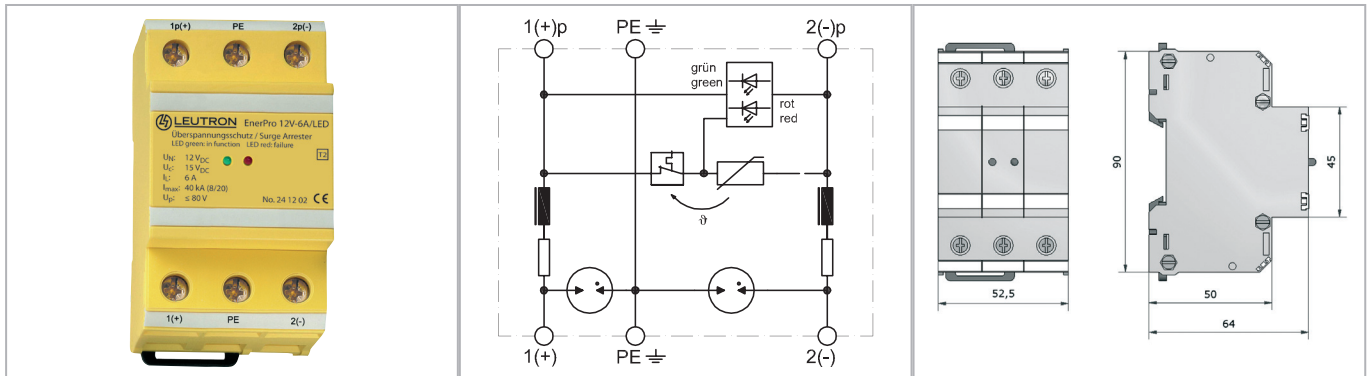


Datasheet

Surge protection of power supply

DC Power Supply



Surge voltage arrester for electrical and electronic devices in looped-in wiring, with disconnection device without interruption of the power supply. A very low protection level allows the use as SPD Typ 3 (class III).

- Two-pole SPD for operating current up to 6 A
- EAC certification

Technical Data		EnerPro 12V-6A/LED
IEC category		Type 2 / class II
Rated voltage DC (1-2/1p-2p)	UN	12V=
Rated voltage AC (1-2 / 1p-2p)	UN	8V~
Max. operating voltage DC (1-2 / 1p-2p)	Uc	15V=
Max. operating voltage AC (1-2 / 1p-2p)	Uc	10V~
Max. operating current	IL	6 A
Response time	tA	< 25 ns
Series inductance, typ.	L	20 µH
Protection level (line-earth)	Up	650 V
Protection level line-line at 1 kV/µs	Up	≤ 80 V
Short-circuit current extinguishing capacity line-line		≤ 6 A
Short-circuit current extinguishing capacity line-earth		≤ 1 A
Max. impulse discharge current (8/20 µs)	I _{max}	40 kA
Critical discharge current (10/700 µs)		1000 A
Max. alternating discharge current (50 Hz/ 5x 0,5s)	I _{wn}	50 A
Service life test current (500 x 10/700 µs)	i _l	200 A
Max. current 50 Hz/0,5 s	I _g	80 A
Operating temperature range	TU	-40 - +80 °C
Max. conductor cross section		50 mm ² stranded/35 mm ² flexible
Dimensions (L x W x H)		52,5 x 90 x 64 mm

Order Data

Product	EnerPro 12V-6A/LED
Article-No.	24 12 02