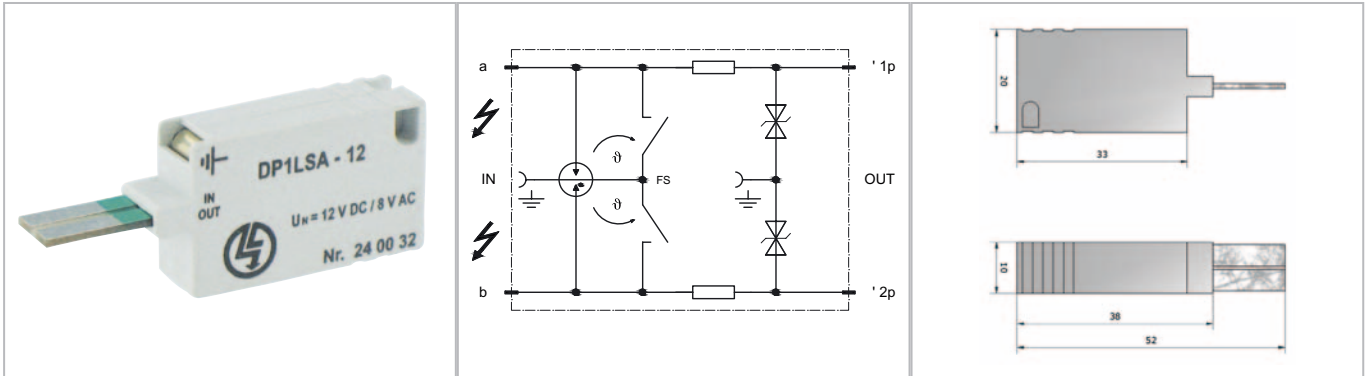


# Datasheet

## Surge protection for information technology and telecommunication installations

### SPD according to test category C2+C1



Surge voltage protective module for one pair of wires for measuring and control systems, in LSA (IDC) disconnection modules. The protective module provides coarse and fine protection in LSA systems (construction form 2). Surge voltage protection connector for 1DA, with fail-safe contact.

- Versions for various voltage levels
- Two-step, coarse and fine protection
- Fail-safe thermal overload protection

Technical Data		DP 1LSA-12
Nominal voltage DC	UN	12V=
Max. continuous operating voltage DC	Uc	14V=
Nominal alternating voltage (50/60Hz)	UN	8V~
Max. continuous operating voltage AC (50/60Hz)	Uc	10V~
Nominal operating current at 25°C	IL	150 mA
C2 nominal discharge current (8/20 μs)	In	5 kA
Nominal discharge current (8/20)	In	10 kA
Protection level at In (line-PG)	Up	≤ 28 V
Residual voltage at 1 kV/μs (line-PG)	Ures	≤ 22 V
Response time	tA	≤ 1 ns
Capacitance, line-earth	C	≤ 2,5 nF
Series impedance per line at 25°C	R	15 Ω
Max. transmission frequency	fg	2,4 MHz
Operating temperature range	TU	-25 - +60 °C
Earthing (Grounding) by		via grounding bar and isolation unit on LSA backmount frame
Enclosure material / colour		self-extinguishing thermoplastic (POCAN) UL 94 V0, grey
Net weight / pc		10 g

### Order Data

Product	DP 1LSA-12
Article-No.	24 00 32